



HOLLAND POLICE DEPARTMENT
27 Sturbridge Road
Holland, MA 01521
Station: (413) 245-0117 – Dispatch: (413) 245-7222 – Fax: (413) 245-4482
 police@hollandma.org



BULLETIN

Subject:	Release Date:	Release To:
<u>Student Drop-Off/Pick-Up Procedure</u>	<u>08/16/2023</u>	• Public Bulletins
	Distributed for Immediate Release	

Classification & Designation:	Distributing Agency:	Authorized By:
(U//Public Bulletins)	Holland Police Department	
<i>Please note that the information contained within this document is being distributed for the purposes of <u>law enforcement intelligence</u> or <u>situational awareness only</u>. No individual identified herein is wanted by this department unless indicated.</i>	27 Sturbridge Road Holland, MA 01521	Bryan C. Haughey Chief of Police
	Station Phone: (413) 245-0117 Dispatch Phone: (413) 245-7222 Email: police@hollandma.org	Voicemail: (413) 245-0117 Ext: 330 Email: bhaughey@hollandma.org

Intel:

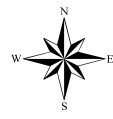
Please review the attached maps that represent the [2023-2024] **morning student drop-off and afternoon pick-up** procedures for the Holland Elementary School. **Please note that the morning and afternoon procedures are different.**

The Holland Police Department has worked with school officials to develop the best possible procedure given the challenge of multiple vehicles entering and exiting the school during the same time frame each day school is in session.

There are several aspects that we need to consider when developing these procedures, most importantly, the safety of our students and allowing for emergency access and egress if needed. We also need to consider minimizing traffic delays for through traffic on Sturbridge Rd and reducing the possibility of impeding faculty, staff, and school buses entering and exiting.

We ask that you pay close attention and follow the procedure we have in place. We understand that no plan is perfect and that there is no way to avoid delay and at times frustration but we know from past experience that by developing a strategic orderly plan we can reach our ultimate goal which is to decrease disruption while keeping everyone as safe as possible.

Thank you in advance for your cooperation.



August 27, 2018

HOLLAND ELEMENTARY SCHOOL AM DROP OFF

Holland, MA

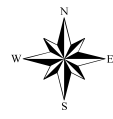
1 inch = 33 Feet



www.cai-tech.com



Data shown on this map is provided for planning and informational purposes only. The municipality and CAI Technologies are not responsible for any use for other purposes or misuse or misrepresentation of this map.



August 27, 2018

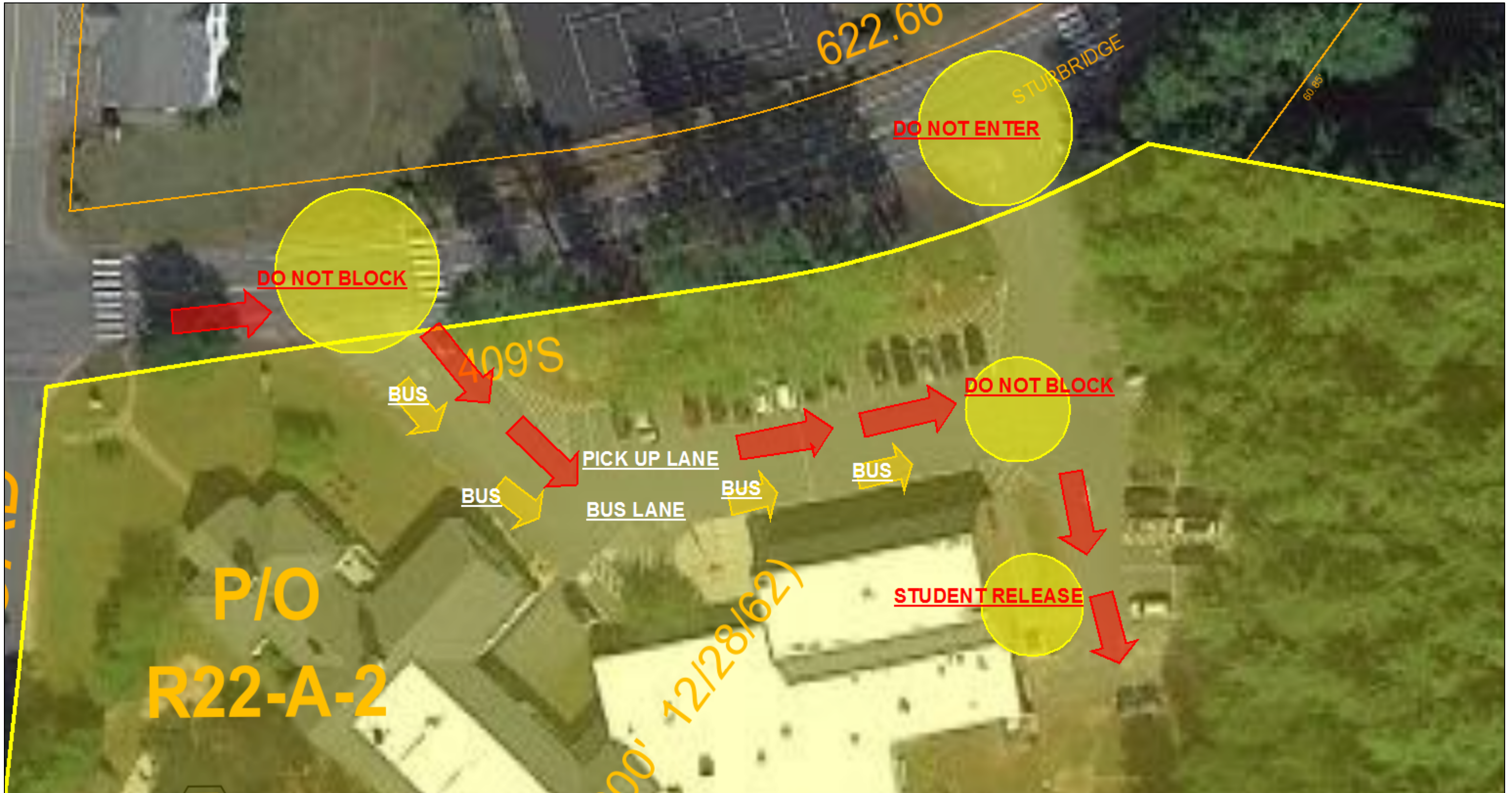
HOLLAND ELEMENTARY SCHOOL PM PICK UP

Holland, MA

1 inch = 33 Feet



www.cai-tech.com



Data shown on this map is provided for planning and informational purposes only. The municipality and CAI Technologies are not responsible for any use for other purposes or misuse or misrepresentation of this map.